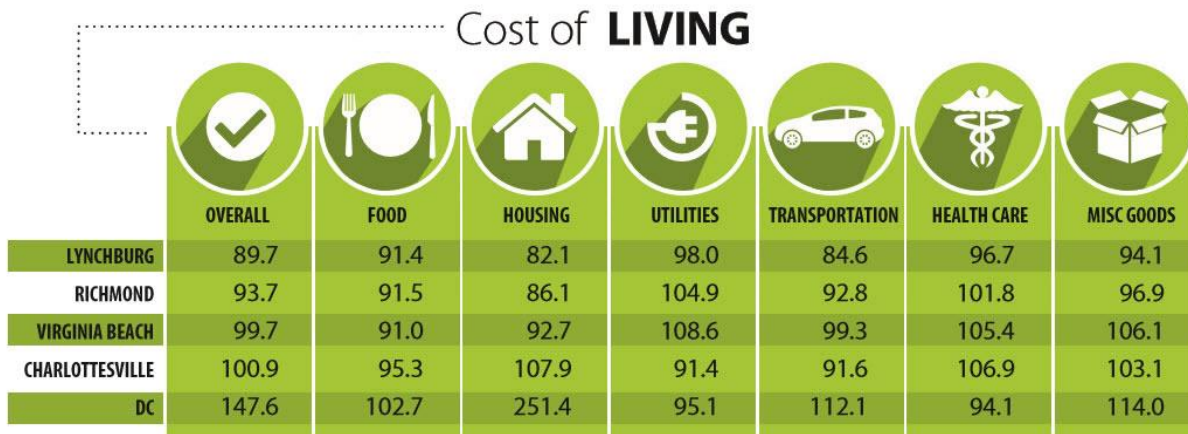


REGION 2000 A GREAT PLACE TO LIVE AND WORK

The 2,122 square mile Lynchburg metropolitan area is located in south central Virginia and includes the City of Lynchburg, counties of Amherst, Appomattox, Bedford and Campbell and the Towns of Altavista, Bedford, Brookneal, Amherst and Appomattox.

REGION 2000 FACTS AND FIGURES

- Cost of living in the region is below the national average and among the lowest in Virginia.



Source C2ERA The Community For Community and Economic Research formerly ACCRA 3rd Quarter 2015

- More than 400 places of worship are represented in the area.
- Fourteen public libraries and branches are located in the various localities with a collection of more than 280,000 volumes.
- Central Virginia is a healthy place to live. There are abundant opportunities to take care of your mind, body and spirit.
- Volunteering is abundant in our communities and people here are generous in giving of their time and talent impacting thousands of people and hundreds of organizations.

EDUCATION

The Region 2000 area offers an abundance of postsecondary educational resources. The region is home to four liberal arts colleges, one university, one community college, and two business colleges. Public schools in our region are also spotlighted in a broad array of Career and Technical Education (CTE) programs. Dual-enrollment arrangements with the local community college enable area students to pursue advanced studies and training while still in high school.

PUBLIC SCHOOL ENROLLMENT (Fall 2015)

Level	Number	Enrollment
Elementary	42	12,118
Middle	11	7,277
High School	9	10,167

Stats from Department of Education

STUDENT TEACHER RATIO (FY 2014)

12:1

Elementary

11:1

Secondary

**HIGH SCHOOL GRADUATES
CONTINUING EDUCATION
(2013-2014)**

80.1%

**ON TIME GRADUATION
(Class of 2014)**

86.3%

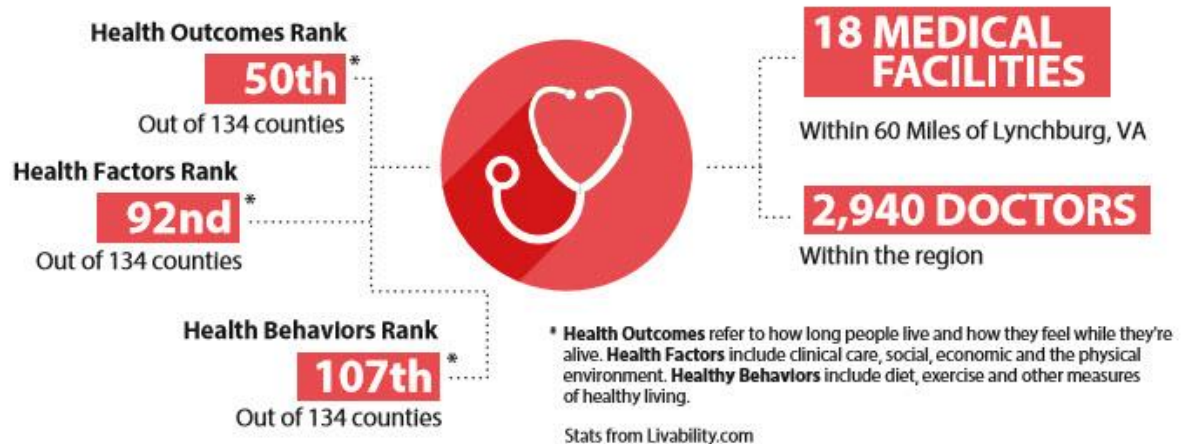


Stats from Community Profile Lynchburg MSA

The region's private schools challenge children to become scholars, leaders, and citizens for the 21st century. From a classical education with the essential elements to a faith based education curriculum, you will find the right educational fit for your child. Private school enrollment regionally reaches 3,500+ students from Pre K through 12th grade.

HEALTH CARE

Affordable, quality healthcare must provide both access and outcomes. Residents have access to 18 medical facilities within 60 miles. The Lynchburg Region ranks 50th for health outcomes, 92nd for health factors and 107th for healthy behaviors in Virginia. Residents spend 9.4% less than the national average on health care-related goods and services.



Region 2000 has one of its three hospitals ranked among the top 100 orthopedic and top 100 cardiovascular centers in the nation.

ARTS

The Academy Center of the Arts houses two art galleries, a theater, two dance studios and is home to the oldest continuous theater group in the country.

The Lynchburg Symphony Orchestra offers a varied concert season each year. This is supplemented by the 1,500-member Community Concert Association, which each year brings several renowned groups to the city.

The Little Town Players perform live theatre in Bedford at the Elks National Home Theatre. This theatre group is in its second decade of providing entertainment for residents of the Lynchburg Region.

Sweet Briar College in Amherst County sponsors many concerts, lectures, and dramatic productions that are available to the general public.

Lynchburg is one of the smallest cities in the country to have both a symphony orchestra (the Lynchburg Symphony) and an opera company (Opera on the James).

The Lynchburg Art Festival, held in September, is one of the region's largest and attracts people from across the state.

The nationally known Virginia Center for the Creative Arts, a retreat for writers, artists and composers, is located at Sweet Briar College in Amherst County.

RECREATION

The Blue Ridge Parkway, one of America's most scenic roads, offers numerous overlooks, campgrounds, picnic areas and hiking trails.

The George Washington National Forest has numerous mountain streams with championship trout fishing along with excellent hunting opportunities.

The Appalachian Trail offers scenic and challenging trails for hikers.

Smith Mountain Lake in southern Bedford County spans 23,400 acres and provides a variety of recreational, dining and shopping opportunities.

Lynchburg is recognized as an official RRCA (Road Runners Club of America) Runner Friendly Community. Every fall Lynchburg hosts thousands of runners and walkers for the Virginia 10 Miler. Established in 1974, the Virginia 10 Miler is one of the premier road races in the country.

Local colleges participate in the full spectrum of individual and team sports including NCAA football, basketball, baseball and soccer

The Lynchburg Region hosts several traditional annual festivals that appeal to young and old alike. Whether you enjoy music, crafts, food or wine, we are certain you will find several to enjoy!

Seven public golf clubs and two private courses, one of which is the top ranked Poplar Grove Golf Course are located in the area.

Professional baseball is available in Lynchburg. The Lynchburg Hillcats are a Class A Advanced affiliate of the Cleveland Indians.

The National D-Day Memorial is located in Bedford, Virginia — the community suffering the highest per capita D-Day losses in the nation. The Memorial honors the Allied forces that participated in the invasion of Normandy on June 6, 1944 during World War II.